



Elitech RC-4 Mini Digital Temperature Data Logger with Detachable Probe Audio Alarm



SKU: ELITECHRC4
Manufacture warranty period: 12 months
Country of Origin: USA

Description:

Temperature data logger Elitech RC-4 features an alarm indicator on the display, a sound alarm and replaceable battery. A reason why it satisfies the dynamic and growing demand for cost-effective temperature data logger in cold chain supply. With Elitech PDF temperature data logger, users can export data in PDF or Excel via Elitech data management software.

For convenience, Elitech designs these temperature data loggers with both internal and optional exterior temperature sensors. They are highly sensitive and able to detect slight changes in temperature. This makes Elitech PDF temperature data loggers a better alternative for: pharmaceuticals, food, medical cabinets, laboratories, cold storage or breeding industry.

Features:

- Reusable, 1 internal temperature sensor, 1 external temperature sensor with a wide range.
- Alarm indication, buzzer alarm, long battery life
- Free MAC/WIN supported software; Selectable temperature unit: °F and °C
- 16,000 data points, with USB/PC connection cable
- Data export in PDF/EXCEL via data management software



Specifications:

Temperature (Built-in Sensor):		
Sensor:	Internal NTC thermal resistor	
Range:	-30°C~60°C	
Accuracy:	±0.5°C (-20~40°C); ±1°C(other).	
Resolution:	0.1 °C	
External Temperature Probe:		
Range:	-40°C~85°C	
Export Data		
Software:	Eligible for Mac or Windows	
Interval:	10 sec to 24 hours	
Capacity:	16000 points (MAX)	
Power by		
Battery:	1 x CR2450 Battery	
Dimensions		
Size:	84 x 44 x 20 mm	
Weight:	60 grams (Battery excluded)	



Package includes:

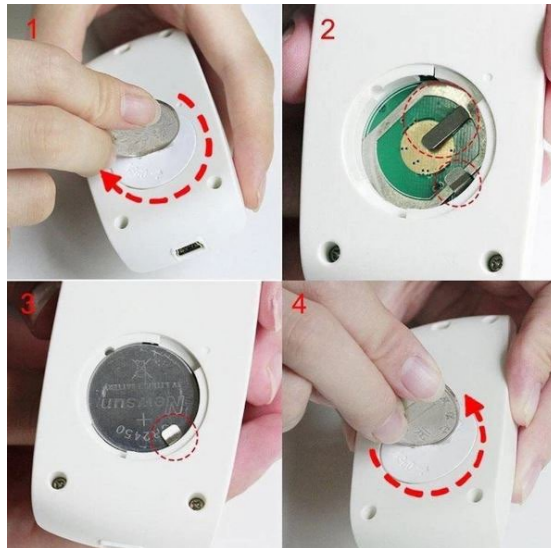
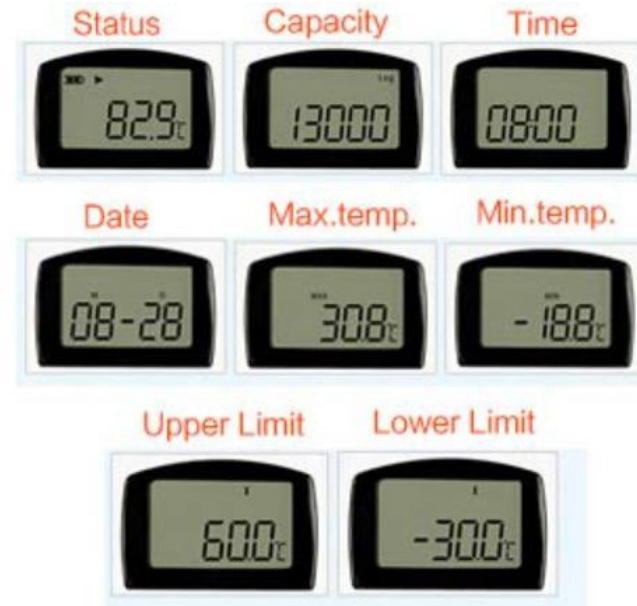
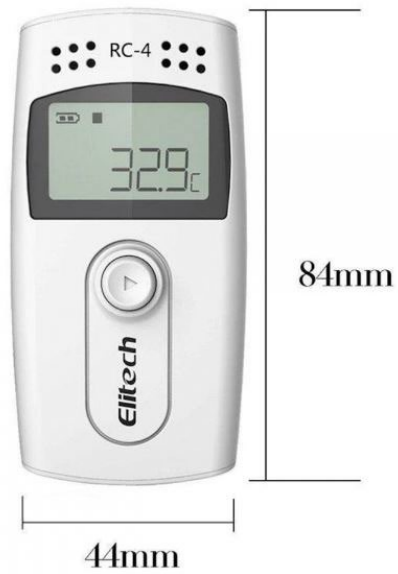
- 1 x RC-4 Datalogger
- 1 x Detachable Temperature Probe
- 1 x Micro USB Cable
- 1 x User Manual
- 1 x CR2450 Battery

Packing Dimension:

- 11 x 9 x 3 cm
- Weight: 150 grams

Package includes: 1 x RC-4 Data Logger; 1 x External Sensor Probe;
1 x USB Cable; 1 x Validation Certificate; 1 x User Manual







ElitechLog V6.3.0

[Loading](#)
[Summary](#)
[Parameter](#)
[Graph](#)
[History](#)
[Import](#)
[Email](#)
[System](#)
[About Us](#)
[Help](#)
[Exit](#)

Device Information

Device Model RC-4	Device Time 2022-07-10 11:03:34	Serial Number EF5225100308	Firmware Version V2.2	Trip Description RC-4 Data Logger
Logging Interval(H:M:S) 0:5:0	Logging Status Not Started.	Start Delay 0.0	Temperature Unit °C	
Start Time N/A	Expected Stop Time Not Started.	Logging Duration	Storage Mode	Alarm Logging Interval Shorten (1 min)
Press Button Disable	Notification Tone Disable	Alarm Disable	Total Memory 16000	

Statistical Information

Total Memory 0	Current Readings 0	First Reading N/A	Last Reading N/A	First Alarm(Temperature) N/A
Maximum(Temperature) 0.0	Minimum(Temperature) 0.0	Average(Temperature)	Mean Kinetic Temperature (MKT) 0.0	
Maximum(Humidity)	Minimum(Humidity)	Average(Humidity)	First Alarm(Humidity)	

Alarm Information

Alarm	Alarm Status
H1: 30.0°C	Normal
L1: -10.0°C	Normal

Graph

Graph List Summary

X-Axis: Time No.

— Temperature°C
 — Upper Limit
 — Lower Limit
 --- Fault

ID 2
 29.5°C
 07-10 11:09:17

Export Data | Filter Data | Cancel



Export to EXCEL

Data Report					
File created on:2022-07-10 11:36:45					
4 Device Information					
5 Device Model	RC-4	Logging Interval	5m	Start Time	2022-07-10 11:04:17
6 Total Space	16000	Button Stop	Disable	Temperature Unit	°C
7 Storage Mode	N/A	Alarm Tone	Disable		
8 Mute Button	Disable	Alarm Logging Interval Shorter	N/A		
9 Trip Description					
10 Serial Number	EF5225100308				
11 Trip Description	RC-4 Data Logger				
12 Alarm Settings					
13 Ht:30.0°C Normal					
14 Ideal Zone					
15 Lt:-10.0°C Normal					
16 Summary					
17 Data Points	7		Mean Kinetic Temperature (M)	27.3	
18 First Reading	2022-07-10 11:04:17		Last Reading	2022-07-10 11:34:17	
19 Maximum(Temperature)	29.8°C		Minimum(Temperature)	18.5°C	
20 Average(Temperature)	27.3°C		Logging Duration	0D 0H 30M 0S	
21 First Alarm(Temperature)	N/A				
22 Maximum(Humidity)	N/A		Minimum(Humidity)	N/A	
23 Average(Humidity)	N/A				
24 First Alarm(Humidity)	N/A				
25					
26					
27					
28					
29	No.	Time	Temperature °C	Humidity%	
30	1	2022-07-10 11:04:17	29.8		
31	2	2022-07-10 11:09:17	29.5		
32	3	2022-07-10 11:14:17	29.3		
33	4	2022-07-10 11:19:17	29.3		
34	5	2022-07-10 11:24:17	29.1		
35	6	2022-07-10 11:29:17	25.4		
36	7	2022-07-10 11:34:17	18.5		
37					
38					

Export to PDF

Data Report File created on: 2022-07-10 11:36:45

Device Information

Device Model:	RC-4	Probe Type:	Temperature
Serial Number:	EF5225100308	Firmware Version:	V2.2
Total Space:	16000		

Trip Description

Trip Number:	N/A
Trip Description:	RC-4 Data Logger

Config Info

Button Stop:	Disable	Logging Interval:	5m
Mute Button:	Disable	Alarm Logging Interval Shorter (1 min):	-
Alarm Tone:	Disable	Storage Mode:	-

Alarm Threshold

Ht Above:	30.0°C	OK
Lt Below:	-10.0°C	OK

Summary

Maximum:	29.8°C	Start Time:	2022-07-10 11:04:17
Minimum:	18.5°C	Stop Time:	2022-07-10 11:34:17
Average:	27.3°C	Logging Duration:	30m
Max Ht:	27.3°C	Total Memory:	7
Alarm Time(s):	N/A	Current Readings:	7

www.a-elec.com 1/2 File Name: EF5225100308_1