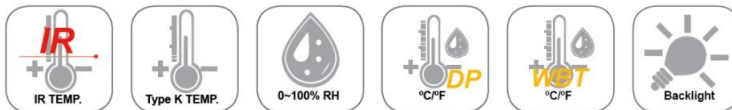




CEM DT-8896 4-in 1 Environment Meter, Psychrometer /w Infrared Thermometer, K- Type Probe



SKU: CEMDT8896BK
Manufacture warranty period: 12 months
Country of Origin: China

Introduction:

DT-8896 infrared dry and wet meter, the instrument has non-contact temperature measurement (infrared temperature measurement) function, its built-in laser point can greatly improve the accuracy of the measurement. The backlit LCD screen and user-friendly switch buttons make it easier to use. Its built-in K-type thermocouple and high-accuracy temperature and humidity sensor make the instrument more outstanding.

Feature:

- Three-in-one professional test tool: K-type temperature measurement, infrared temperature measurement and dry-wet meter
- Three independent digital displays LCD screen
- Built-in micro-processing system can guarantee the accurate performance of measurement
- Fast response: all data can be calculated 4 times in 1 second
- Standard K-type thermocouple (NiCr-NiAl) jack can be inserted into all K-type probes
- Infrared measurement surface temperature function
- Red laser pointer
- Backlit LCD display
- USB interface
- Low battery
- Automatic shutdown
- Hand size, easy to carry and use

Applications:

The instrument can be used in the following areas: food, safety equipment and fire detection, plastic mold, asphalt, aquaculture, screen printing, liquid and desiccant temperature measurement, HVAC/R, diesel engine and engine maintenance, etc.



Specifications:

- **Type K Temperature**
 - Range: -100~1372°C /-148~2501°F
 - Resolution: 0.1°C/°F
 - Accuracy: ±1°C/°F
- **Infrared Temperature**
 - Distance to Spot: 30:1
 - Range: -50~-20°C /-58~-4°F
 - Resolution: 0.1°C/°F
 - Accuracy: ±5°C/9°F
 - Range: -20~500°C /-58~-4°F
 - Resolution: 0.1°C/°F
 - Accuracy: ±2% reading or ±2°C/4°F
- **Air Temperature**
 - Range: -20~60°C /-4~140°F
 - Resolution: 0.1°C/°F
 - Accuracy: ±1°C/2.0°F
- **Humidity**
 - Range: 10~90%RH
 - Resolution: 0.1%RH
 - Accuracy: ±2%RH
 - Range: 0~10%RH; 90~100%RH
 - Resolution: 0.1%RH
 - Basic Accuracy: ±3%RH
- **Wet Bulb**
 - Range: -21.6~60°C /-6.88~140°F
 - Resolution: 0.1°C/°F
- **Dew Point**
 - Range: -68~60°C /-90.4~140°F
 - Resolution: 0.1°C/°F
- Operating Conditions: 0~50°C / 32-122°F; <80% RH non-condensing
- Storage Conditions: 0~80°C / 32-176°F; <90% RH non-condensing

- Sample Rate: 1 ~ 3,600 sec
- Sample Data: 10,000
- Power Supply: 9 Volt battery
- **Meter Dimension:**
 - 257mm x 76mm x 53mm
 - Weight: 355g

Package includes:

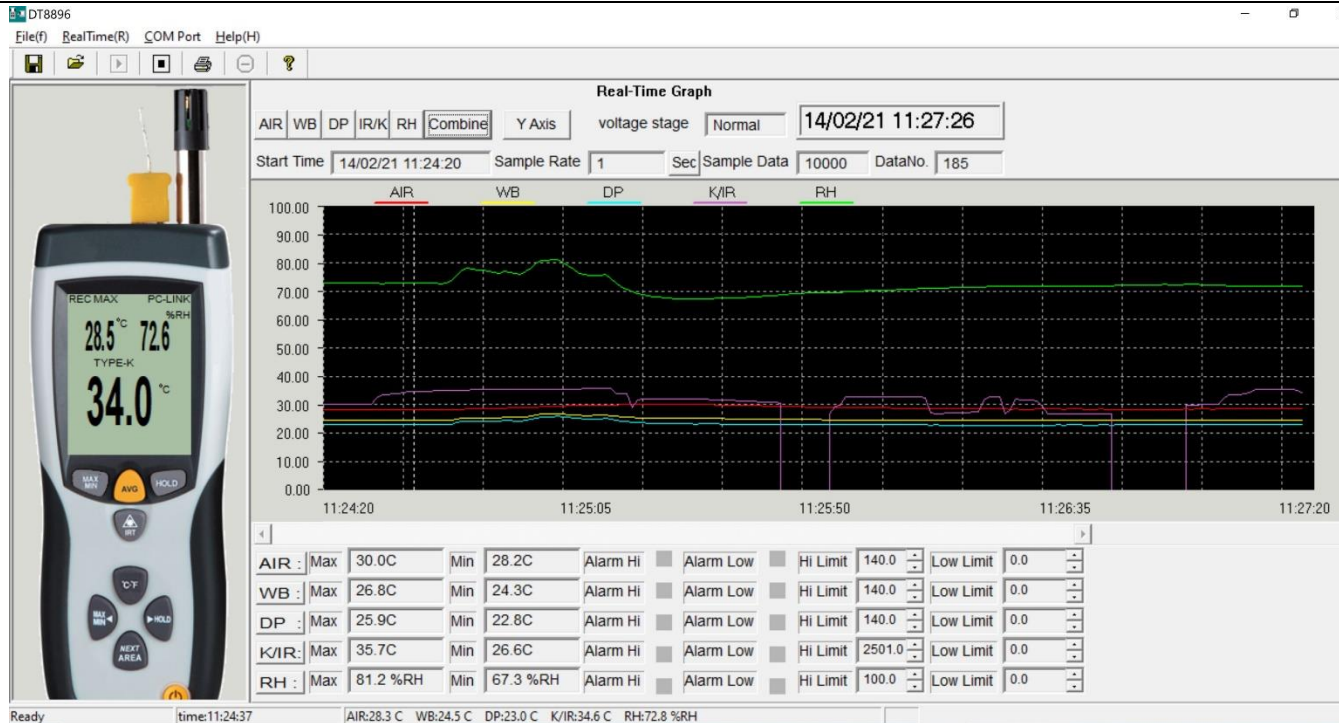
- Hygro-Thermometer x 1
- Type K temperature probe x 1
- USB cable x 1
- Hard Case x 1
- User manual x 1
- 9V Battery x 1

Package Dimension:

- 42 x 30 x 12 cm
- Weight: 1.7 KG







NO	AIR	WB	DP	K/IR	RH	TIME
1	28.3C	24.5C	23.0C	30.0C	72.8%RH	02-14-21/11:24:20
2	28.3C	24.5C	23.0C	30.0C	72.8%RH	02-14-21/11:24:21
3	28.3C	24.4C	22.9C	30.0C	72.8%RH	02-14-21/11:24:22
4	28.3C	24.5C	22.9C	30.0C	72.7%RH	02-14-21/11:24:23
5	28.3C	24.5C	22.9C	30.0C	72.7%RH	02-14-21/11:24:24
6	28.3C	24.4C	22.9C	30.0C	72.7%RH	02-14-21/11:24:25
7	28.3C	24.4C	22.9C	30.0C	72.7%RH	02-14-21/11:24:26
8	28.3C	24.5C	23.0C	30.0C	72.7%RH	02-14-21/11:24:27
9	28.3C	24.4C	22.9C	30.1C	72.7%RH	02-14-21/11:24:28
10	28.3C	24.4C	22.9C	30.1C	72.7%RH	02-14-21/11:24:29
11	28.3C	24.5C	22.9C	32.3C	72.7%RH	02-14-21/11:24:30
12	28.3C	24.4C	22.9C	33.5C	72.6%RH	02-14-21/11:24:31
13	28.3C	24.5C	23.0C	33.5C	72.7%RH	02-14-21/11:24:32
14	28.4C	24.5C	23.0C	33.8C	72.7%RH	02-14-21/11:24:33
15	28.3C	24.5C	22.9C	34.0C	72.7%RH	02-14-21/11:24:34
16	28.3C	24.5C	22.9C	34.3C	72.7%RH	02-14-21/11:24:35
17	28.3C	24.5C	23.0C	34.5C	72.8%RH	02-14-21/11:24:36
18	28.3C	24.5C	23.0C	34.6C	72.8%RH	02-14-21/11:24:37
19	28.3C	24.5C	23.0C	34.6C	72.7%RH	02-14-21/11:24:38
20	28.4C	24.5C	23.0C	34.8C	72.8%RH	02-14-21/11:24:39
21	28.3C	24.5C	23.0C	34.8C	72.7%RH	02-14-21/11:24:40