

CEM DT-8894 CFM/CMM Thermo-Anemometer Infrared Thermometer & PC Software



SKU: CEMDT8894GY
 Manufacture warranty period: 12 months
 Country of Origin: China

Introduction:

The DT-8894 CFM/CMM Thermo-Anemometer with IR Thermometer measures air velocity, air flow (volume), air temperature (with probe) and surface temperature (with the infrared function). The large, easy to read backlit LCD includes primary and secondary displays plus numerous status indicators. The infrared feature includes a laser pointer for convenient targeting. In addition, the meter can store 16 area setting dimension for easy recall. Proper use of this meter will provide years of reliable service. The DT-8894 CFM/CMM Thermo-Anemometer also come with interface computer software for real-time monitoring and datalogging features.

Feature:

- CFM/CMM Thermo-Anemometer with built-in non-contact IR Thermometer measure remote surface temperatures to 500°C (932°F) with 30:1 distance to spot ration and laser pointer
- Simultaneous display of Air Flow or Air Velocity plus Ambient Temperature
- Up to 8 easy to set area dimensions (cm² or ft²) are stored in the meter's internal memory
- 20 points average for Air Flow and Air velocity
- Super large (9999 counts) LCD Backlit Display
- 3% velocity accuracy via low friction 2.83"D (72mm) ball bearing vane wheel on 3.9ft (120cm) cable
- Data hold and Max/Min functions
- Can set Auto Power off or on
- Complete with vane sensor with 3.9ft (120cm) cable, 9V battery, and protective rubber holster
- **Real-time monitoring and datalogging function using USB interface cable to computer**



Applications:

- HVAC installation, repair, diagnostics and optimization
- Fume hood testing, installation and verification
- Ventilation system installation, servicing and analysis
- Environmental wind and temperature testing / analysis
- Boiler rooms
- Linear flow output monitoring
- Automobile aerodynamic testing
- Plant / Facilities Maintenance

Specifications:

- **Air Velocity**
 - **Unit: m/s(meter per second)**
 - Range: 0.40~30.00
 - Accuracy: $\pm 3\% \pm 0.20\text{m/s}$
 - Resolution: 0.01m/s
 - **Unit: ft/min (feet per minute)**
 - Range: 80~5900
 - Accuracy: $\pm 3\% \pm 40\text{ft/min}$
 - Resolution: 1ft/min
 - **Unit: km/h (kilometre per hour)**
 - Range: 1.4~108.0
 - Accuracy: $\pm 3\% \pm 0.8\text{km/h}$
 - Resolution: 0.1km/h
 - **Unit: MPH (miles per hour)**
 - Range: 0.9~67.0
 - Accuracy: $\pm 3\% \pm 0.4\text{MPH}$
 - Resolution: 0.1MPH
 - **Unit: Knots (nautical miles per hour)**
 - Range: 0.8~58.0
 - Accuracy: $\pm 3\% \pm 0.4\text{knots}$
 - Resolution: 0.1knot

• Air Flow

- CFM
 - Range: 0-999900
 - Resolution: 0.001
 - Area: 0-999.9 ft²
- CMM
 - Range: 0-999900
 - Resolution: 0.001
 - Area: 0-999.9 m²

• Air Temperature

- Range: -10-60°C(14-140°F)
- Accuracy: $\pm 2.0^\circ\text{C}(4.0^\circ\text{F})$
- Resolution: 0.1°C/°F

• InfraRed Temperature

- Range: -50 to -20°C (-58 to -4°F)
 - Accuracy: $\pm 5.0^\circ\text{C}(9.0^\circ\text{F})$
- Range: -20 to 500°C (-4 to 932°F);
 - Accuracy: $\pm 2\%$ reading
- Resolution: 0.1°C/°F
- Distance to spot ration (D:S): 30:1
- Emissivity: 0.95

• Meter Dimensions:

- Main instrument: 203mm x 75mm x 50mm
- Weight: 280 grams



Standard Certification:

- CE
- EMC
- EN: 61326





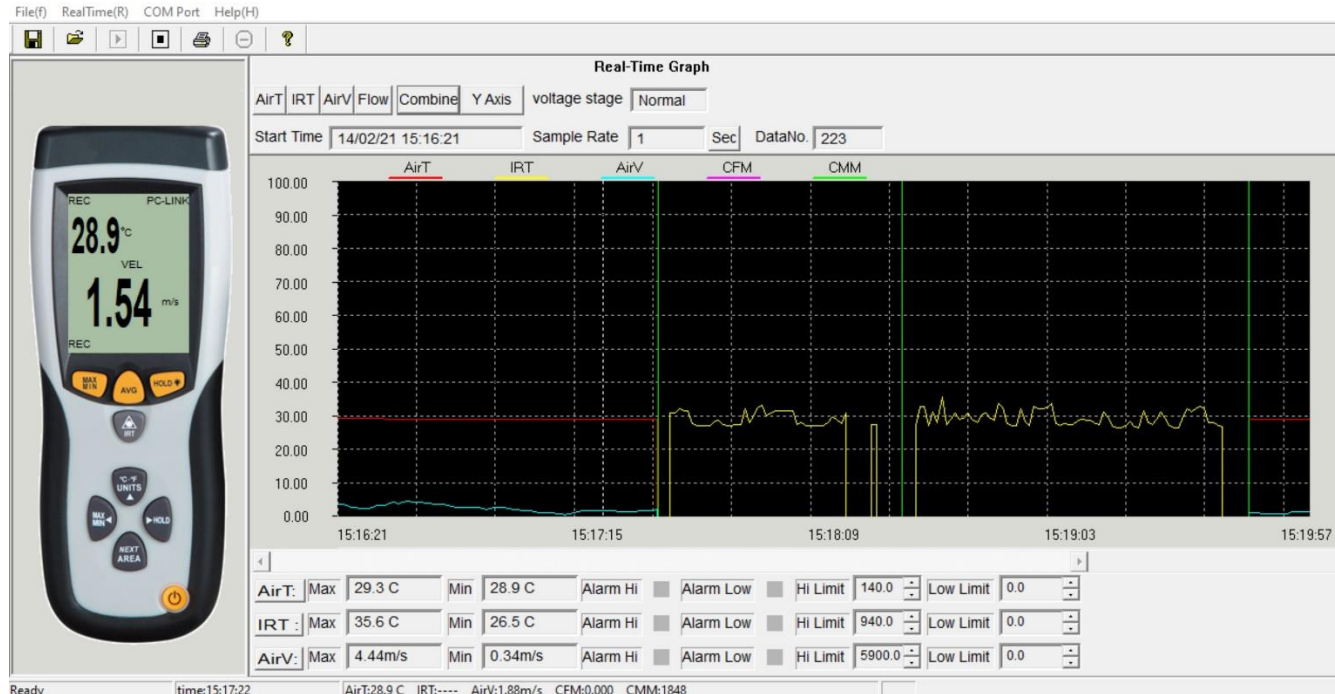
Package includes:

- Anemometer & Vane Probe x 1
- USB cable x 1
- CD Software (Window interface) X 1
- Hard Case x 1
- User manual x 1
- 9V Battery x 1

Package Dimension:

- 42 x 30 x 12 cm
- Weight: 1.6 KG





	A	B	C	D	E	F	G	H
1	NO	AirT	IRT	AirV	CFM	CMM	TIME	
2	1	29.2C	----C	3.78m/s		0	3715	02-14-21/15:16:21
3	2	29.2C	----C	3.52m/s		0	3460	02-14-21/15:16:22
4	3	29.2C	----C	3.22m/s		0	3165	02-14-21/15:16:23
5	4	29.2C	----C	2.83m/s		0	2781	02-14-21/15:16:24
6	5	29.2C	----C	2.68m/s		0	2634	02-14-21/15:16:25
7	6	29.2C	----C	2.43m/s		0	2388	02-14-21/15:16:26
8	7	----C	32.2C	----m/s	----	----		02-14-21/15:17:39
9	8	----C	31.5C	----m/s	----	----		02-14-21/15:17:40
10	9	----C	31.6C	----m/s	----	----		02-14-21/15:17:41
11	10	----C	27.7C	----m/s	----	----		02-14-21/15:17:42
12	11	----C	27.2C	----m/s	----	----		02-14-21/15:17:43
13	12	----C	27.1C	----m/s	----	----		02-14-21/15:17:44
14	13	----C	27.0C	----m/s	----	----		02-14-21/15:17:45
15	14	----C	27.2C	----m/s	----	----		02-14-21/15:17:46
16	15	----C	28.4C	----m/s	----	----		02-14-21/15:17:47
17	16	----C	28.5C	----m/s	----	----		02-14-21/15:17:48
18	17	----C	27.5C	----m/s	----	----		02-14-21/15:17:49
19	18	----C	26.9C	----m/s	----	----		02-14-21/15:17:50